

# Natal Branco - White Christmas

$\text{♩} = 150$

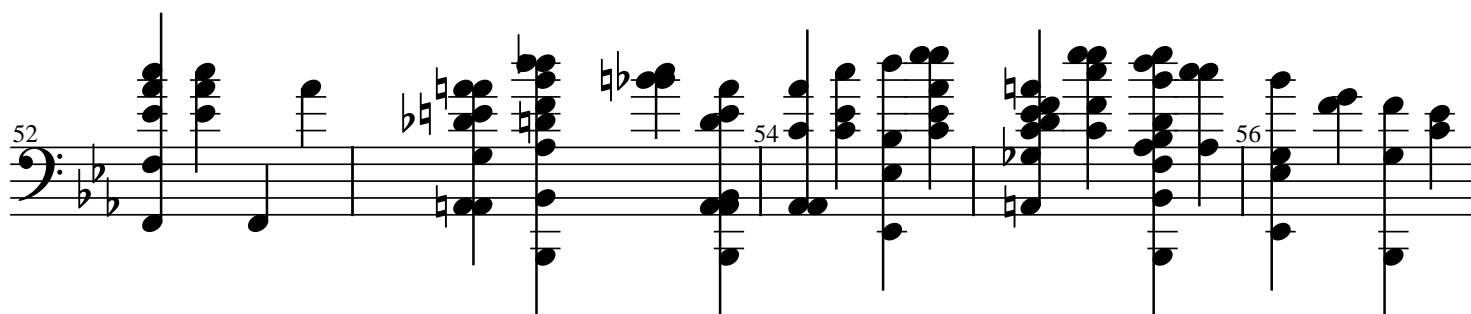
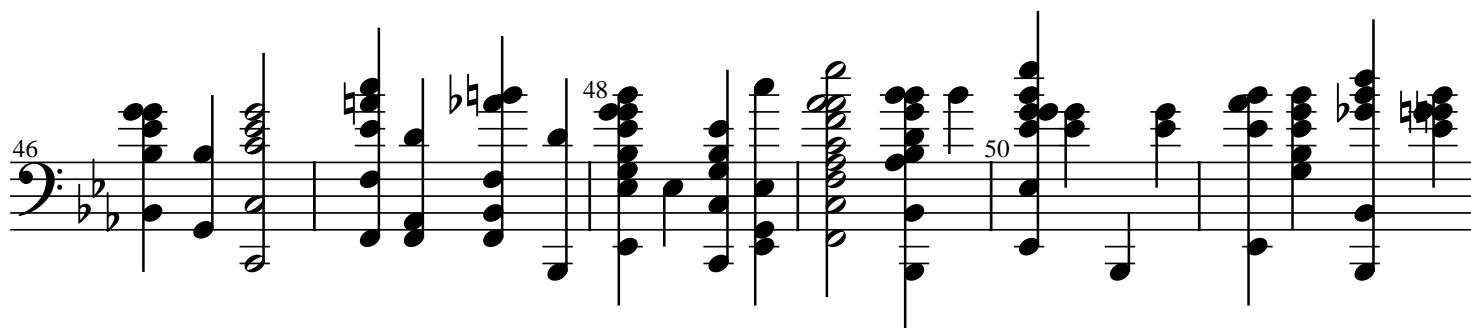
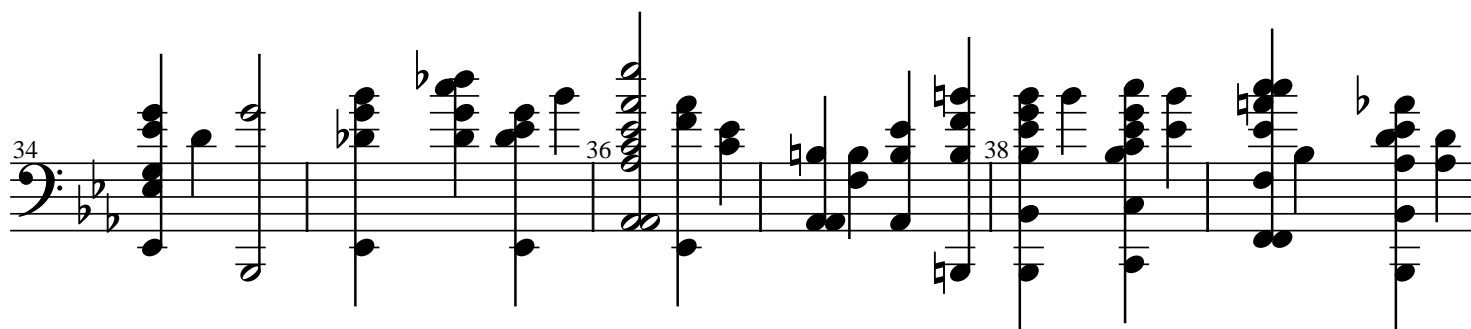
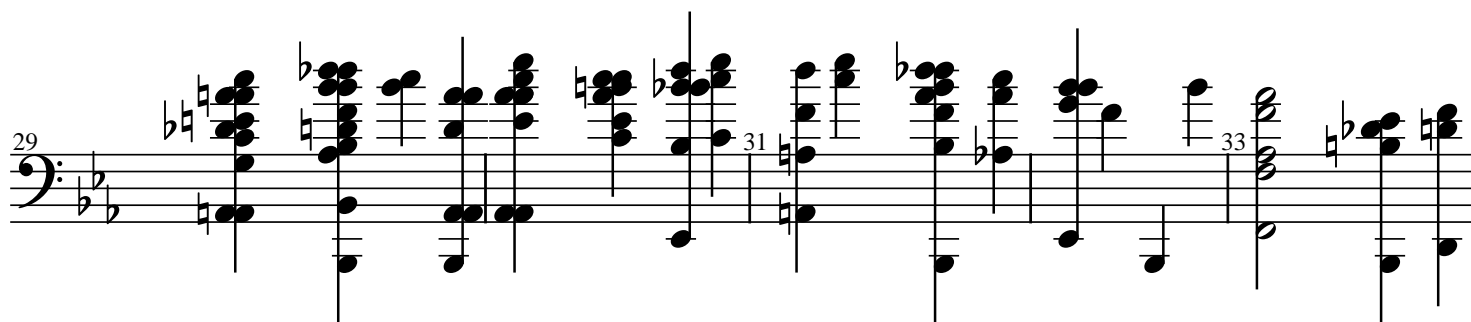
Fagote

6

12

17

23



A musical score for the song 'The Rose Tree'. The score is written for a single melodic line on a five-line staff. The key signature has one flat (B-flat), and the time signature is 4/4. The melody begins with a treble clef and a key signature change to one flat. The notes are: G4 (quarter), A4 (quarter), B4 (quarter), C5 (quarter), B4 (quarter), A4 (quarter), G4 (quarter), F#4 (quarter), E4 (quarter), D4 (half). The melody then continues with: C4 (half), B3 (quarter), A3 (quarter), G3 (quarter), F#3 (quarter), E3 (quarter), D3 (half). The melody concludes with: C3 (half), B2 (quarter), A2 (quarter), G2 (quarter), F#2 (quarter), E2 (quarter), D2 (half). The score is labeled with the number 57 at the beginning and 61 at the end.

A musical score for the song 'The Rose Tree'. The score is written for a single melodic line in G major, 4/4 time. The key signature has one sharp (F#) and the time signature is 4/4. The melody is written on a single staff. The score is divided into three systems, each containing four measures. The first system starts with a treble clef and a key signature of one sharp. The second system starts with a key signature change to two sharps (D major). The third system starts with a key signature change to one sharp (F# major). The melody is simple and consists of eighth and quarter notes. The lyrics 'The Rose Tree' are written below the staff, aligned with the melody. The score is numbered 63, 65, and 67 at the beginning of each system.

A musical score for the song 'The Rose Tree'. The score is written for a single melodic line in G major, 4/4 time. It begins with a treble clef, a key signature of one sharp (F#), and a common time signature (C). The melody is composed of eighth and quarter notes, with some measures containing beamed eighth notes. The score is divided into two systems. The first system contains measures 68 and 69. The second system contains measures 70 and 71. The melody is simple and catchy, typical of a folk song. The lyrics 'The Rose Tree' are written below the notes in a stylized, handwritten font.

The image shows the bass line of a musical score for 'The Rose Tree'. The music is written on a single staff with a bass clef and a key signature of two flats (B-flat and E-flat). The tempo is marked 'Allegretto' and the time signature is 3/4. The score includes measure numbers 72, 74, and 76. The melody consists of eighth and sixteenth notes, with some measures containing beamed sixteenth notes. The bass line is primarily composed of eighth notes and rests, providing a steady accompaniment to the melody.

[illegible]

